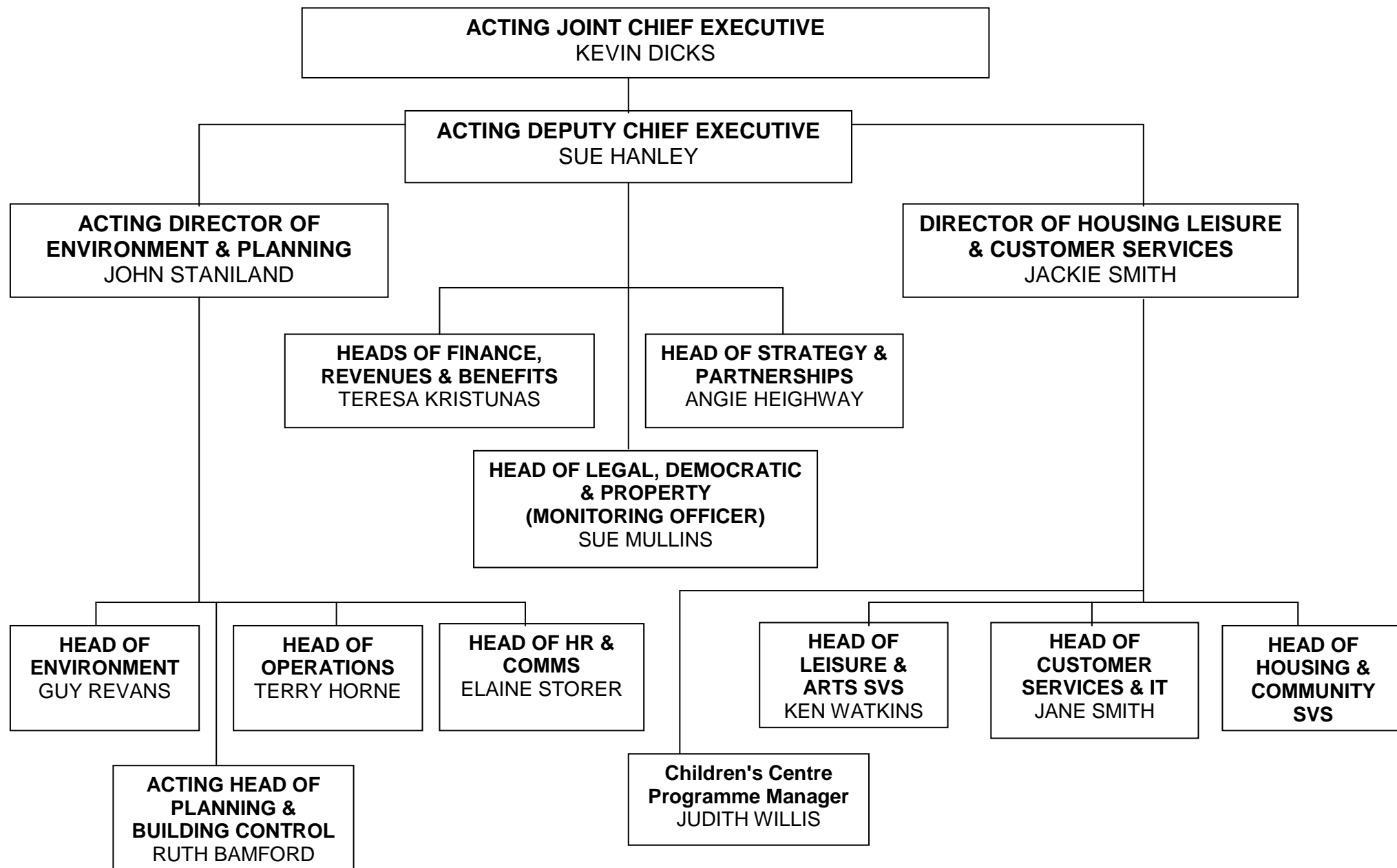
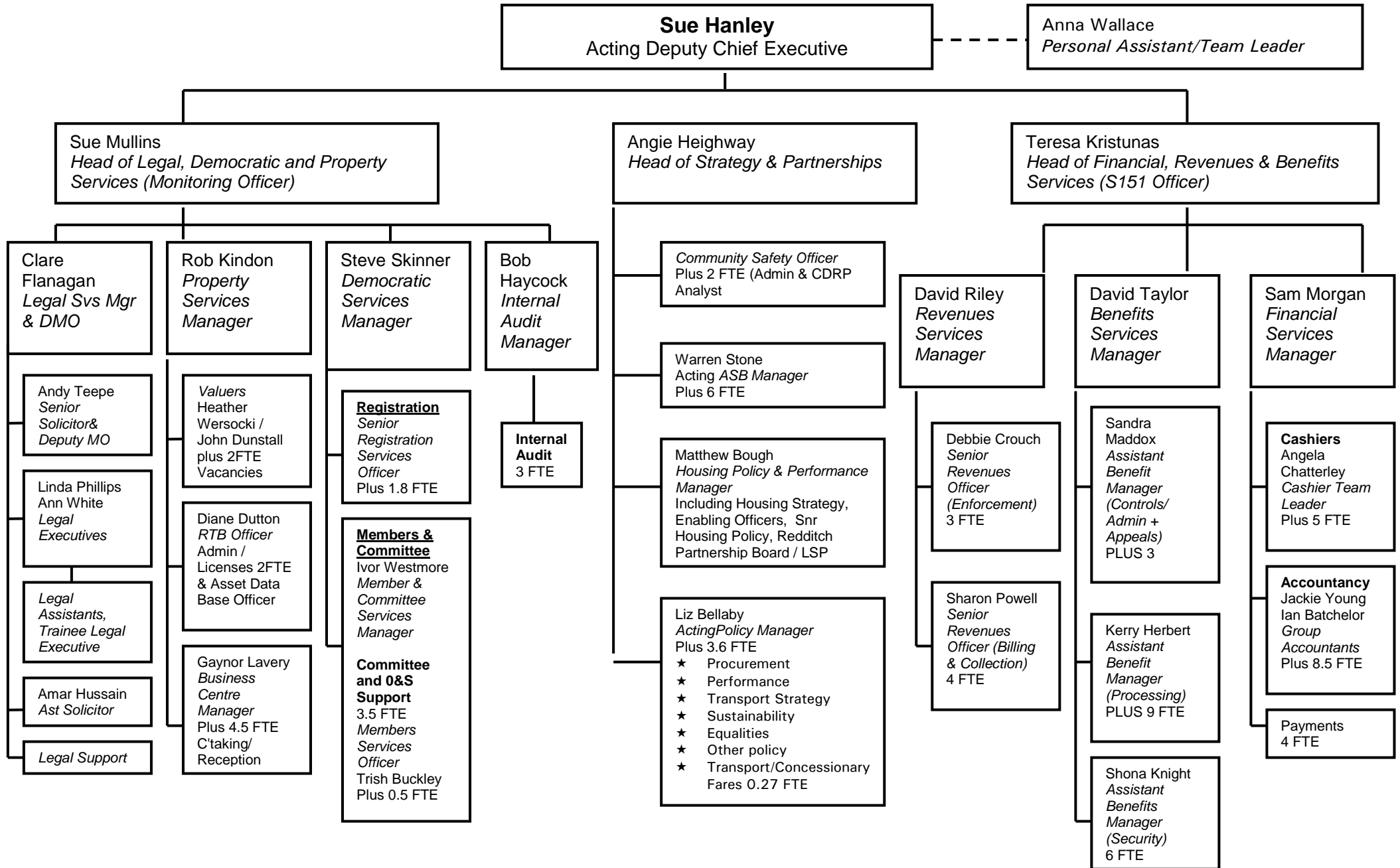


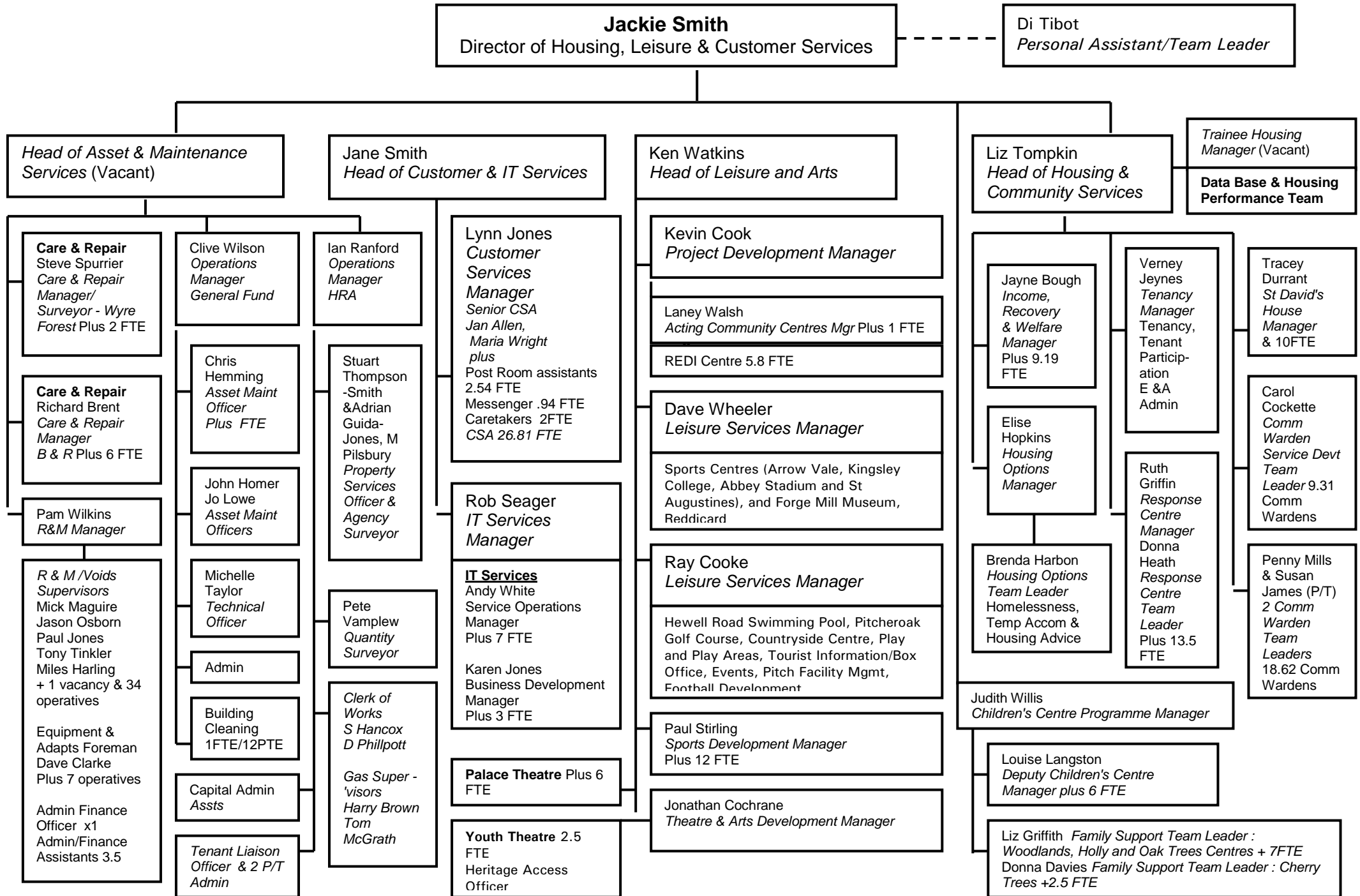
REDDITCH BOROUGH COUNCIL : STRUCTURE FROM 1st AUGUST 2008



ACTING DEPUTY CHIEF EXECUTIVE DIRECTORATE



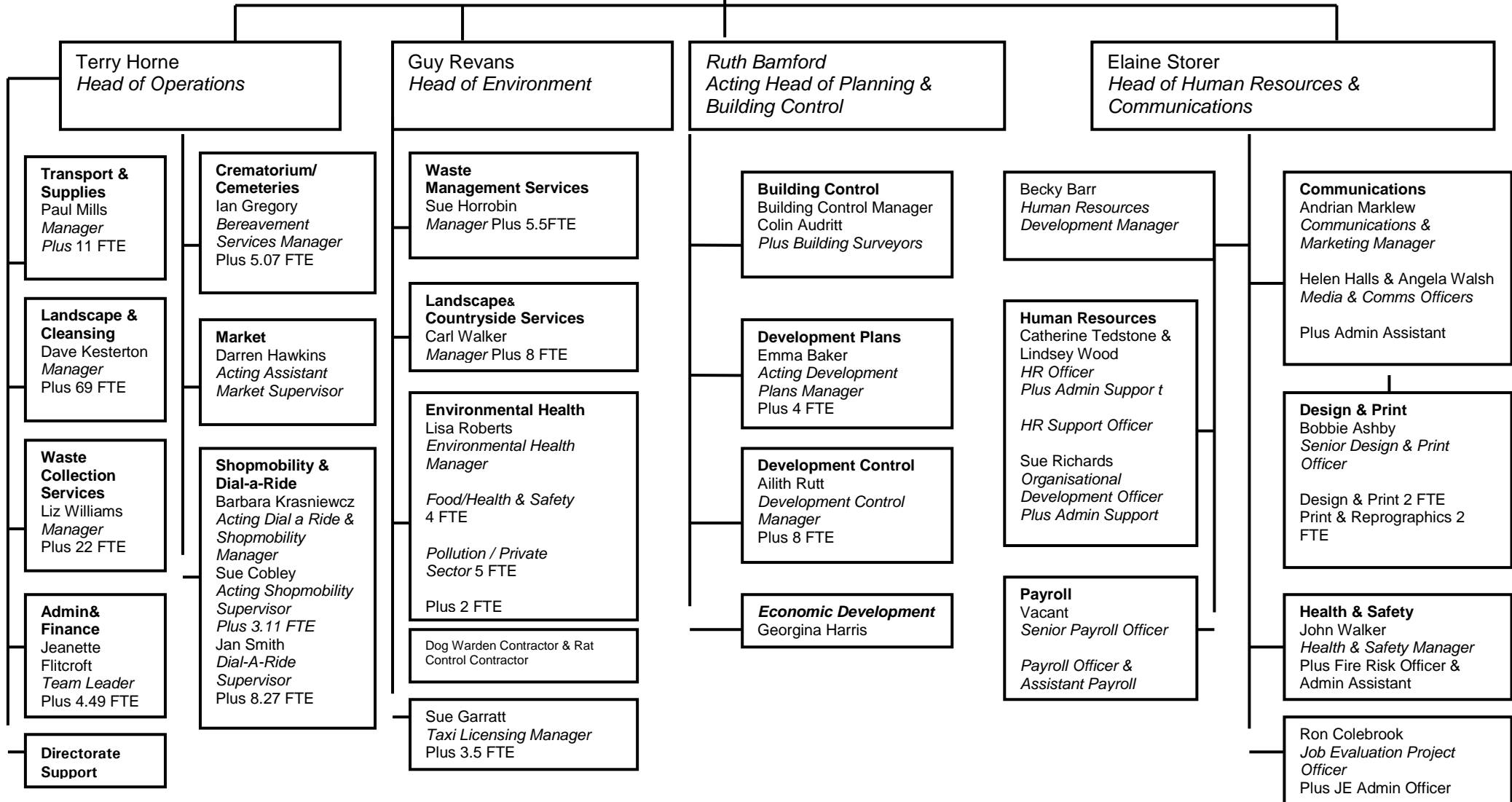
HOUSING, LEISURE & CUSTOMER SERVICE DIRECTORATE



ENVIRONMENT & PLANNING DIRECTORATE

John Staniland
Acting Director of Environment & Planning

Nigel Boot
Personal Assistant (Seconded)



|